



DEINES
MANUFACTURING
CORPORATION

MODEL 50 SLI DECK SUPPLEMENT

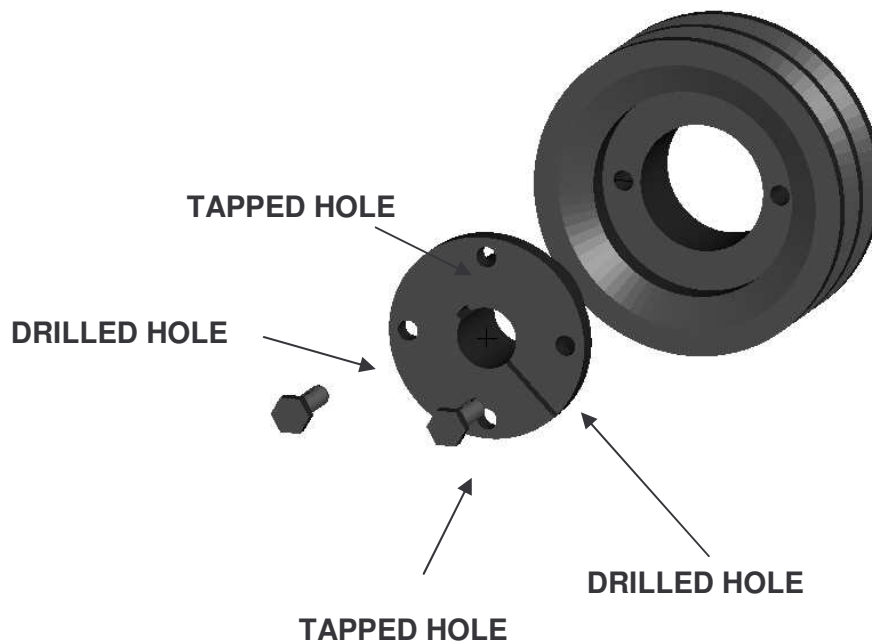
PARTS AND SERVICE MANUAL

DEINES MANUFACTURING CORPORATION
306 WEST HIGHWAY 4
RANSOM, KS 67572
800-624-6774
martyj@gbta.net

DECK MAINTENANCE FOR ALL MODELS

AREA OF MAINTENANCE	HOURS	NOTES:
Gearbox	8	Check lubricant every 8 hours. A vented dipstick plug is located on the top of the gearbox. The oil level should be at the fill line on the dipstick tube. If the oil level is low add 80w90 gear oil. CAUTION! DO NOT OVERFILL. Tighten the dipstick finger tight. Over tightening this dipstick will damage your gearbox housing.
Blade Spindle Housing	40	Use one stroke of a lubricator with multipurpose grease. This prevents moisture from accumulating in the housing.
Castor Wheel Forks	8	Use two strokes of a lubricator with multi purpose grease.
Castor Wheel Stem (pneumatic tire)	8	Use three strokes of a lubricator with multi purpose grease. (using the
Castor Wheel Fork & Stem Adjustment	8	Check clip and pin to see that clip is secure to prevent fork or stem from falling out of the deck arm.

GEAR BOX PULLEY INSTALLATION AND REMOVAL

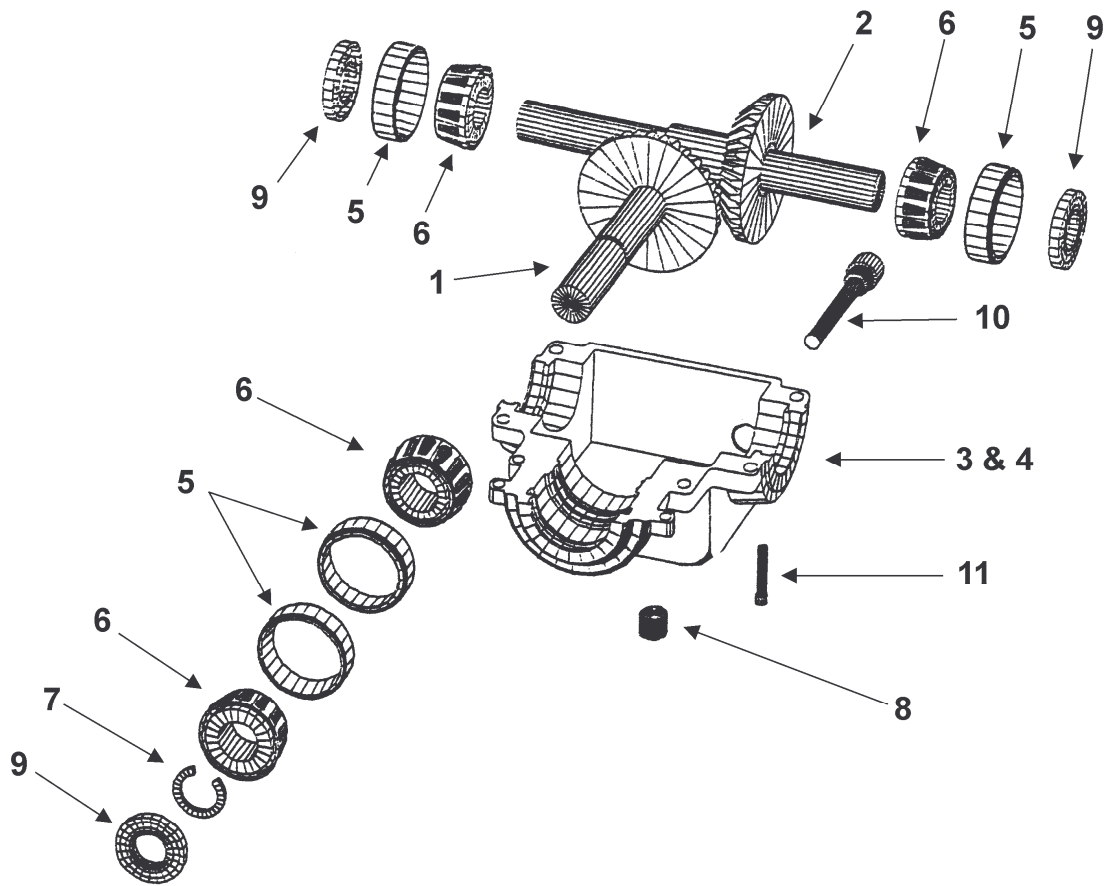


TO INSTALL GEARBOX PULLEY ON GEARBOX SHAFT:

1. Align drilled holes in bushing flange with tapped holes in sheave hub.
2. Insert capscrews through drilled holes in bushing flange and thread loosely in tapped holes in
The sheave.
3. Position assembly on shaft and tighten capscrews progressively and uniformly.
4. Torque specifications for a 1/4-20 grade 5 bolt is a maximum of 8 foot pounds. Do not over torque.

TO REMOVE:

1. Remove capscrews and thread in tapped holes in bushing flange. Tighten progressively until
bushing is free from sheave taper.
2. Remove assembly from shaft.
3. **Do not** use a puller on this type of sheave.



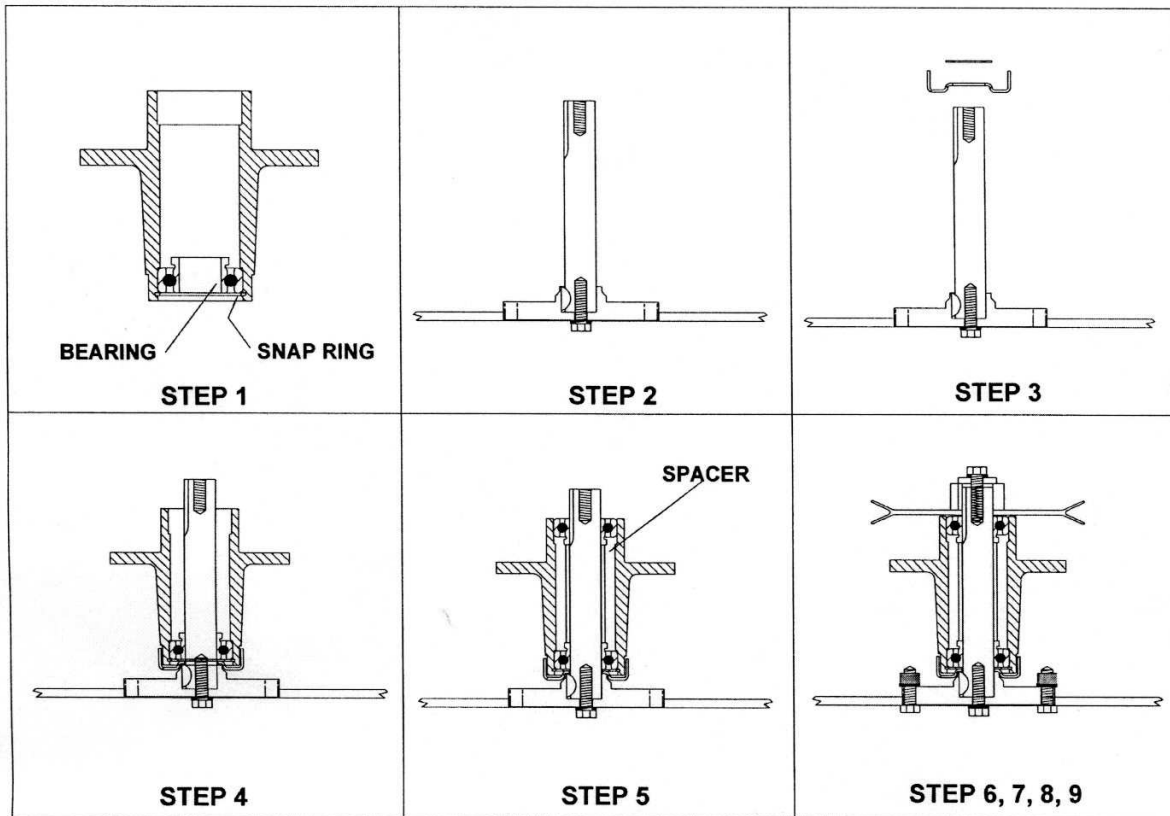
SUPERIOR GEARBOX PARTS EXPLOSION

MODEL # R100-9AAC-A0485

REF. NO.	PART NO.	DESCRIPTION	REQ'D.
1	R100-8B00-A0500	PINION SHAFT WITH GEAR	1
2	R100-8B00-A050	CROSSHAFT WITH GEAR	1
3	R100-003M-A0427	CASTING WITH TAPPED HOLES	1
4	R100-004M-A0503	CASTING WITH THRU HOLES	1
5	300-227A	BEARING CUP	4
6	300-227	BEARING CONE	4
7	203293	RETAINING RING	1
8	200300	PIPE PLUG	4
9	109873	SEAL	4
10	IP3021	DIPSTICK	1
11	103125	SOCKET HEAD CAP SCREW	8

USE 80W90 MULTIPURPOSE OIL IN THE SUPERIOR GEARBOX.
USE THE DIPSTICK TO DETERMINE OIL FILL LEVEL.

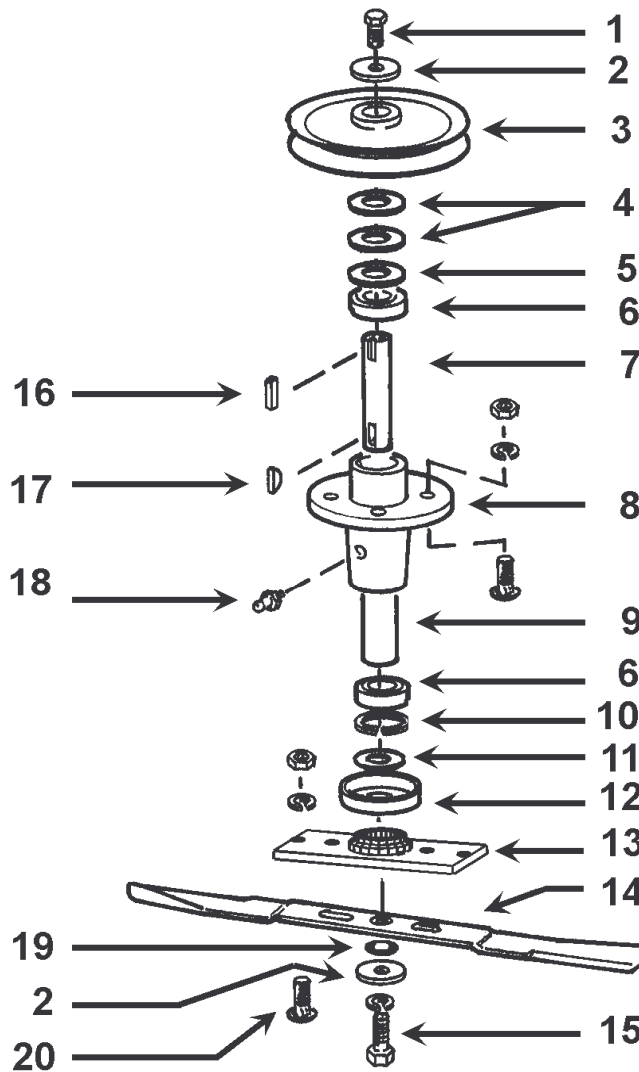
SPINDLE ASSEMBLY INSTRUCTIONS



PRIOR TO SERIAL# Y1909

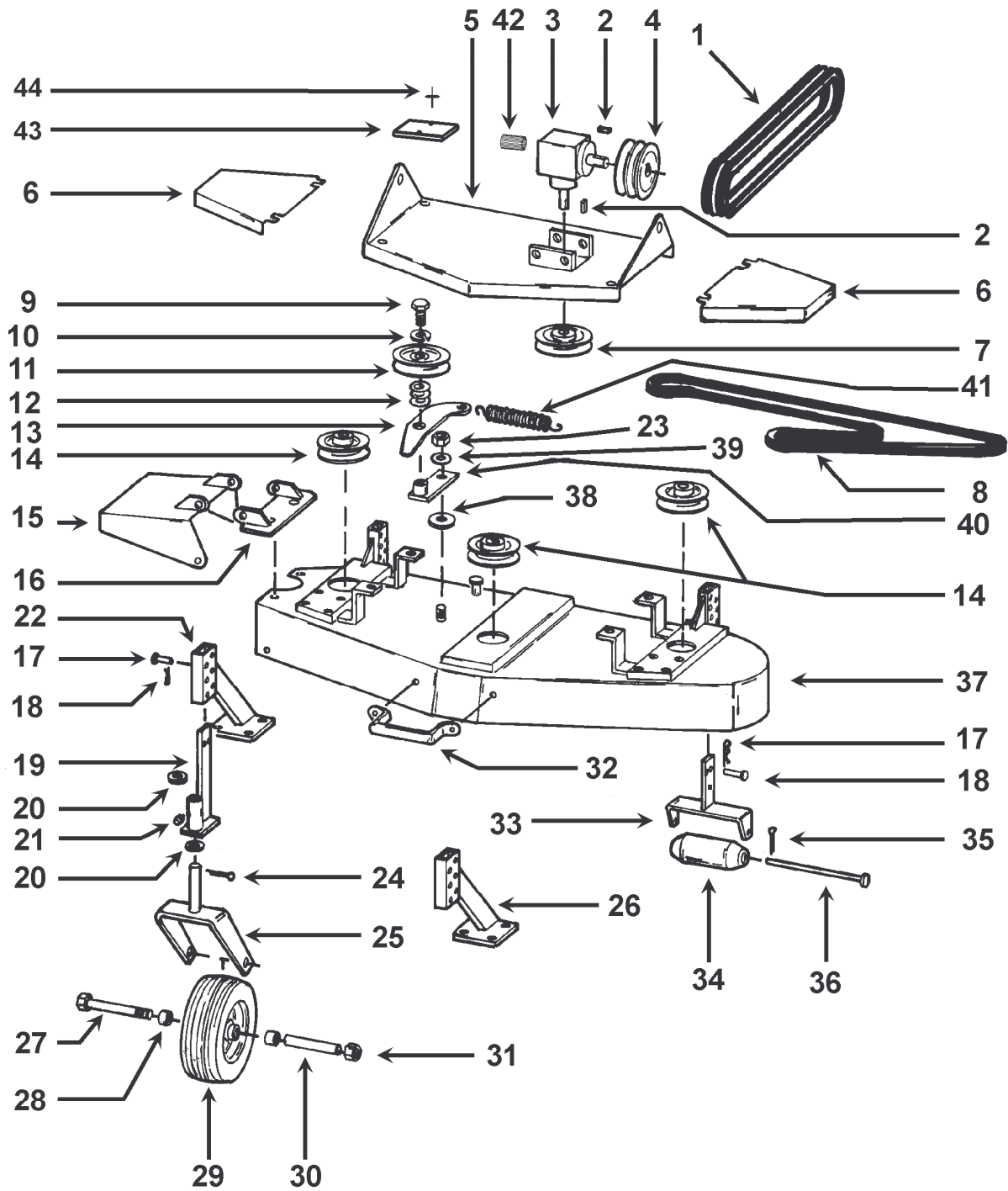
1. Place bottom bearing in housing and secure with snap ring.
2. Assemble shaft, blade saddle, woodruff key, blade, lock washer, and bolt. Tighten bolt and draw shaft into bottom of the blade saddle.
3. Place trash shield and machine bushing over shaft and against blade saddle.
4. Slide the above shaft assembly in bearing that is in the hub.
5. Slide spacer over the shaft and press the bearing into top side of the hub. Again be sure to place hub of bearing toward center of the hub.
6. Place machine bushing on shaft and against the bearing.
7. Slide the pulley onto the shaft using the square key.
8. With bolt, nut and washer secure the pulley to the shaft and clamp the rotating assembly together.
9. Install set screws in pulley using lockite. Install bolts, lock washers and nuts on the two remaining holes in the blade.

SPINDLE ASSEMBLY



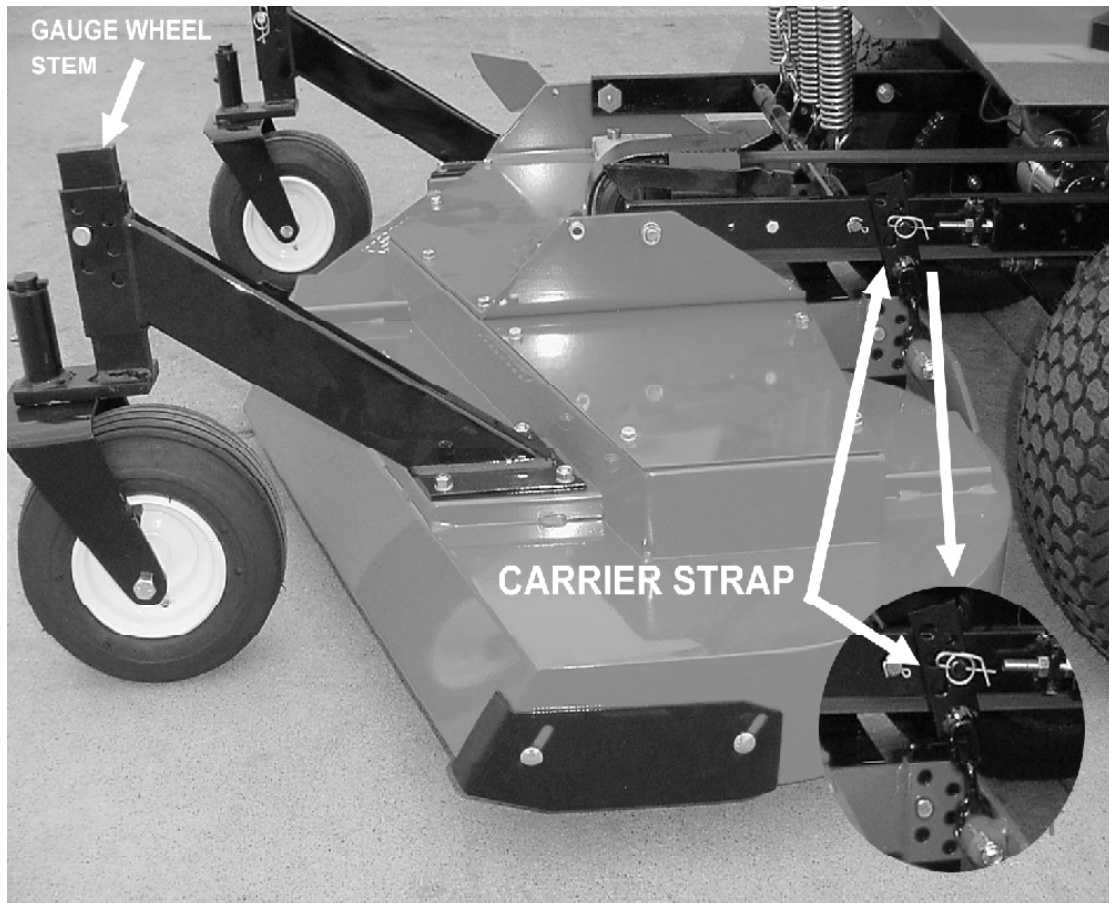
REF. #	PART NUMBER	DESCRIPTION	QTY.
1	300-466	3/8 - 24 X 1 HHCS	3
2	300-173	WASHER	6
3	300-606	PULLEY	3
4	300-195A	THICK MACHINE BUSHING	9
5	300-195	THIN MACHINE BUSHING	3
6	300-642	BEARING	6
7	300-603	SPINDLE SHAFT	3
8	300-641	SPINDLE HOUSING	3
9	300-643	SPINDLE SPACER	3
10	400-257	SNAP RING	3
11	300-195A	THICK MACHINE BUSHING	3
12	300-607	TRASH SHIELD	3
13	300-682	BLADE SADDLE	3
14	300-609	BLADE	3
15	300-466	3/8 - 24 X 1 HHCS	3
16	300-289	KEY	3
17	100-172	WOODRUFF KEY	3
18	300-212A	GREASE ZERK	3
19	100-536	BLADE SPACER	3
20	300-465	3/8 - 16 X 1 HHCS	6

50 DECK ASSEMBLY



50 DECK PARTS

REF.	PART #	DESCRIPTION	QTY.
1	400-288	DRIVE BELTS	2
2	300-289A	KEY	2
3	300-655	GEARBOX	1
4	400-178	PULLEY	1
5	300-680	GEARBOX PLATE	1
6	300-678	RH & LH DECK SHIELD	2
7	300-615	GEARBOX PULLEY	1
8	300-679	DECK BELT	1
9	300-585	5/8 - 18 X 1 1/2	1
10	300-517	5/8 LOCKWASHER	1
11	700-534	IDLER PULLEY	1
12	300-195A	MACHINE BUSHING	4
	300-195	MACHINE BUSHING	1
13	300-686	ARM LINKAGE	1
14	300-606	SPINDLE PULLEY	3
15	300-674	GRASSCHUTE	1
16	300-675	HINGE PLATE	1
17	300-203	PIN	4
18	300-202	CLIP	4
19	300-395	CASTOR WHEEL STEM	2
20	300-195A	MACHINE BUSHINGS	4
21	300-212	GREASE FITTING	2
22	300-646	RH CASTOR ARM	1
23	300-511	LOCKNUT	1
24	200-238	ROLL PIN	2
25	300-391	FORK	2
26	300-647	LH CASTOR ARM	1
27	300-264	AXLE	2
28	400-234	BEARING	4
29	300-247	WHEEL & TIRE	2
30	300-117	SPACER	2
31	300-509	NUT	2
32	400-998	HANDLE	1
33	300-243	ROLLER BRACKET	2
34	100-132	ROLLER	2
35	300-279	COTTER PIN	2
36	300-201	ROLLER PIN	2
37	300-676	DECK HOUSING	1
38	300-706	FRICTION WASHER	1
39	400-121	WAVY WASHER	1
40	300-685	IDLER ARM	1
41	300-687	SPRING	1
42	400-918	PLASTIC SLEEVE	1
43	100-490	NYLON WEAR PLATE	2
44	300-544	POP RIVET	4
45	300-509	HEX NUT	2
47	300-212	GREASE FITTING	2
NOT SHOWN	400-727	DO NOT OPERATE DECAL	1
NOT SHOWN	400-728	WHIRLING BLADE DECAL	2
NOT SHOWN	700-172	SHOULDER BOLT	1



ADJUSTING DECK GAUGE WHEELS, REAR ROLLERS AND CHAIN HANGERS

THE CUTTING HEIGHT OF THE MOWER IS DETERMINED BY THE POSITION OF THE GAUGE WHEELS AND THE REAR ROLLER BRACKET ON THE MOWER DECK. THE MOWER DECK IS A FULL FLOATING TYPE AND WILL CLOSELY FOLLOW THE CONTOURS OF THE GROUND WHEN USING THE GAUGE WHEELS AND REAR ROLLERS FOR THE HEIGHT OF VARIOUS CUTTING POSITIONS. ADJUSTMENT IS DONE BY REMOVING THE GAUGE PIN AND CLIP, MOVING THE STEM OF THE FRONT FORK OR REAR ROLLER BRACKET UP OR DOWN TO THE DESIRED HEIGHT. BE SURE TO HAVE ALL FOUR STEMS IN THE SAME ADJUSTMENT.

ON THE MODELS 60, AND 72 DECKS THERE IS CARRIER STRAP LOCATED AT THE REAR OF THE DECK. IT IS VERY IMPORTANT TO ADJUST THE STRAP AT THE SAME TIME THE FRONT CASTOR WHEEL FORK IS ADJUSTED. KEEP THE REAR ROLLERS APPROXIMATELY 1/8" TO 1/4" ABOVE THE GROUND BY PLACING THE PIN ON THE PUSHARM INTO THE PROPER HOLE ON THE CARRIER STRAP IN ORDER TO RAISE OR LOWER THE REAR OF THE DECK TO ATTAIN THE DESIRED RESULT.

THE OPTIMUM SETTING IS WHERE THE REAR OF THE DECK IS JUST SLIGHTLY HIGHER THAN THE FRONT OF THE DECK. THIS WAY THE BLADE HAS TO CUT THE GRASS ONLY ONCE.